

Precision pressure regulator

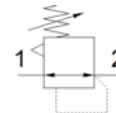
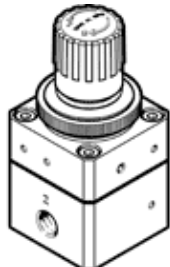
LRP-1/4-2,5

Part number: 162834

FESTO

Use a suitable precision pressure gauge Type MAP or Type FMAP with this product.

Without pressure gauge.



Data sheet

Feature	values
Actuator lock	Rotary knob with lock
Assembly position	Any
Design structure	Piloted precision diaphragm regulator
Controller function	Output pressure constant with secondary exhaust
Pressure gauge	Prepared for G1/8
Working pressure	1 ... 12 bar
Pressure regulation range	0.05 ... 2.5 bar
Max. pressure hysteresis	0.02 bar
Standard nominal flow rate	1,800 l/min
Operating medium	Compressed air in accordance with ISO8573-1:2010 [7:4:4] Inert gases
Note on operating and pilot medium	Lubricated operation not possible
Medium temperature	-10 ... 60 °C
Ambient temperature	-10 ... 60 °C
Product weight	310 g
Mounting type	Front panel installation Line installation with accessories
Pneumatic connection, port 1	G1/4
Pneumatic connection, port 2	G1/4
Materials note	Conforms to RoHS
Materials information for seals	NBR
Materials information, housing	Aluminum