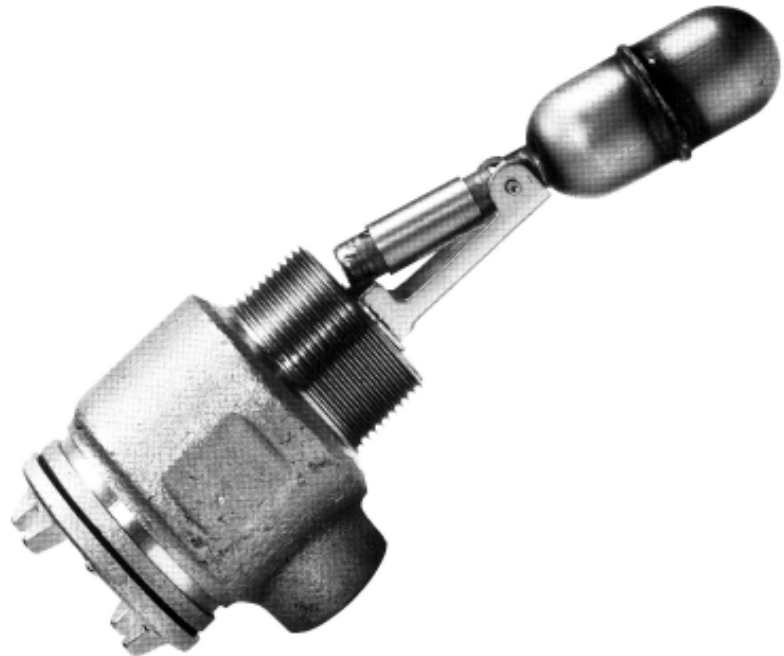


Float Type Compact Level Switch CS-1000

Upper or lower level limit alarm switch



Introduction

The float type CS-1000 is a compact level switch with a stainless steel float. It is horizontally mounted on tanks to give an alarm with a reed switch activated by change in liquid level. The system is suited to fuel oil storage tanks and the likes.

Features

- Simple function
- Extremely compact design
- Safe operation
- Reliable mechanical contact
- Easy mounting
- High corrosion resistance (stainless steel)
- Automatic pump and valve control with level controller "W4"

For upper limit alarm: ON when liquid level exceeds the set position

For lower limit alarm: ON when liquid level becomes lower than set position

Operating temperature: -20 ~ +80°C

Max. working pressure: 20 kg/cm²
(1961.4kPa)

Specific weight of liquid: 0.7 ~ 2.0

Accuracy: Better than ±5mm
(at specific gravity of 1)

Protection: Waterproof
CS-1103W
Explosion-proof
CS-1103E

Sakura Endress

The Power of Know How



Features (cont.)

Mounting: Tank side horizontally
Threaded PT 1 1/2"
(CS-1103)
Flanged Low pressure
CS-1203
High pressure CS-1603
(Min. 3" flange to be used)

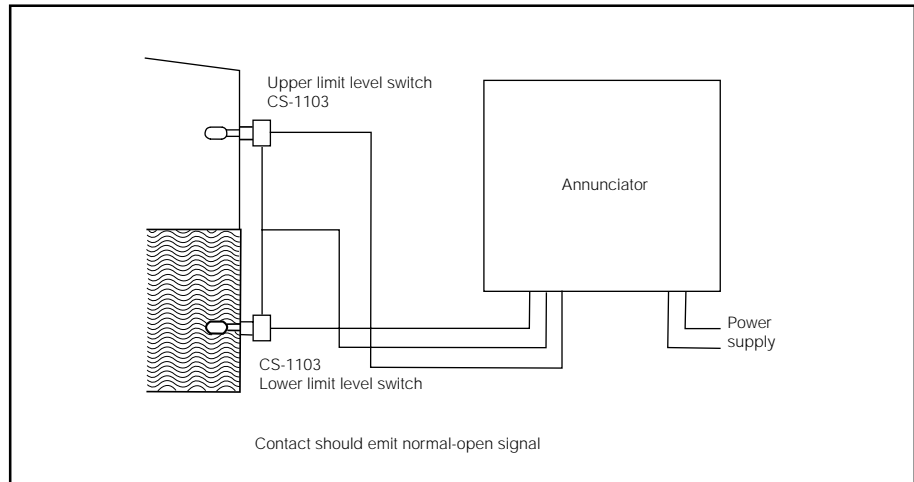
Material: Stainless steel (JIS SUS 304)

Cable inlet diameter: 16mm (1/2")

Weight: Approx. 1kg (CS-1103)

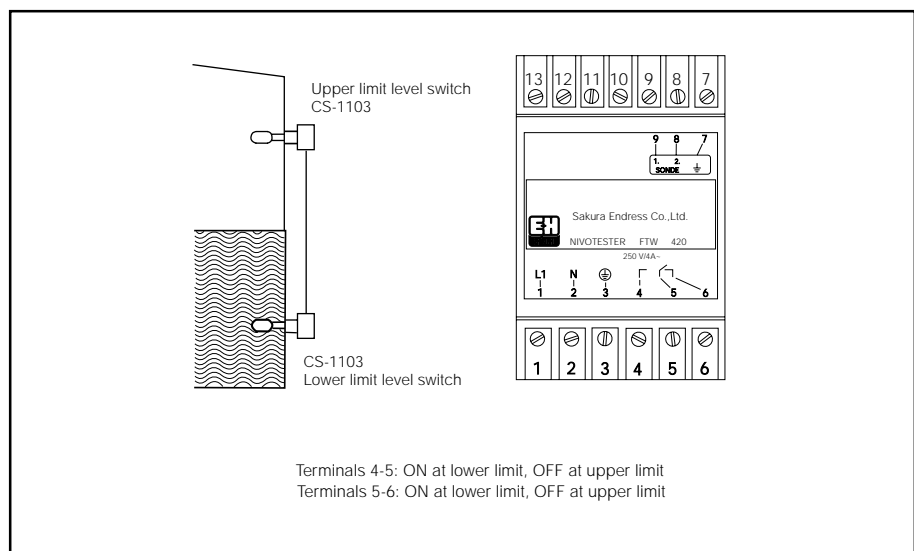
Application

- Upper or lower limit alarm signal conveniently obtainable for controlling pump and valve
- Over flow protection switch
- Usable in pressure vessels
- Explosion-proof type available



For Alarm Indication

Alarm lamp comes on and buzzer sounds when the level switch is combined with annunciation panel.



For Pump and Valve Controls

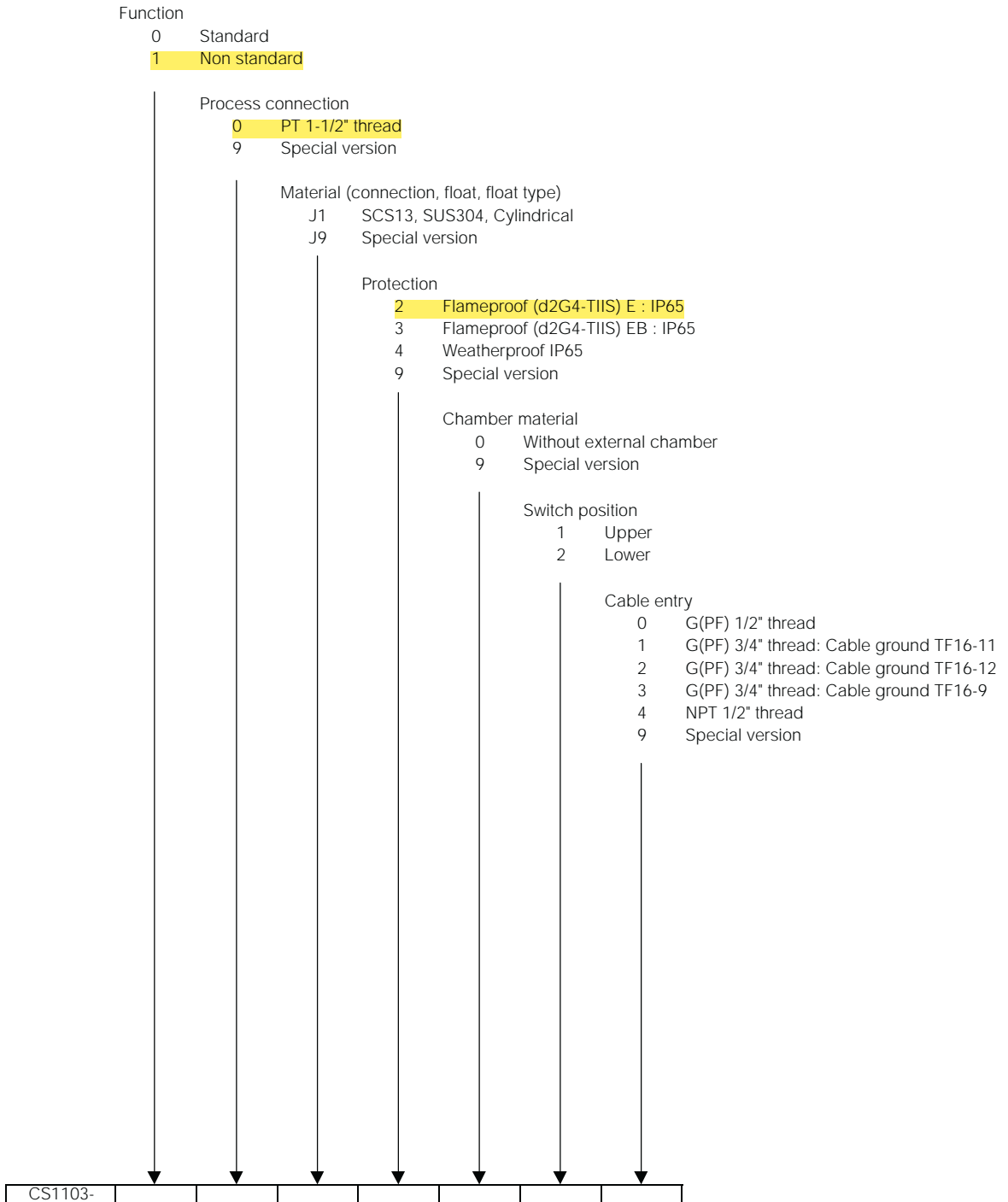
Control circuit is not required when the level switch is combined with Level Controller. Pump and valve can be controlled simply by supplying them with contact output from Level

Controller W4. (However, it is necessary to amplify the contact signal with relay when contact capacity exceeds AC 220V or DC 200V max., 100VA max.)

Product Structure

LEVEL SWITCH CS1103

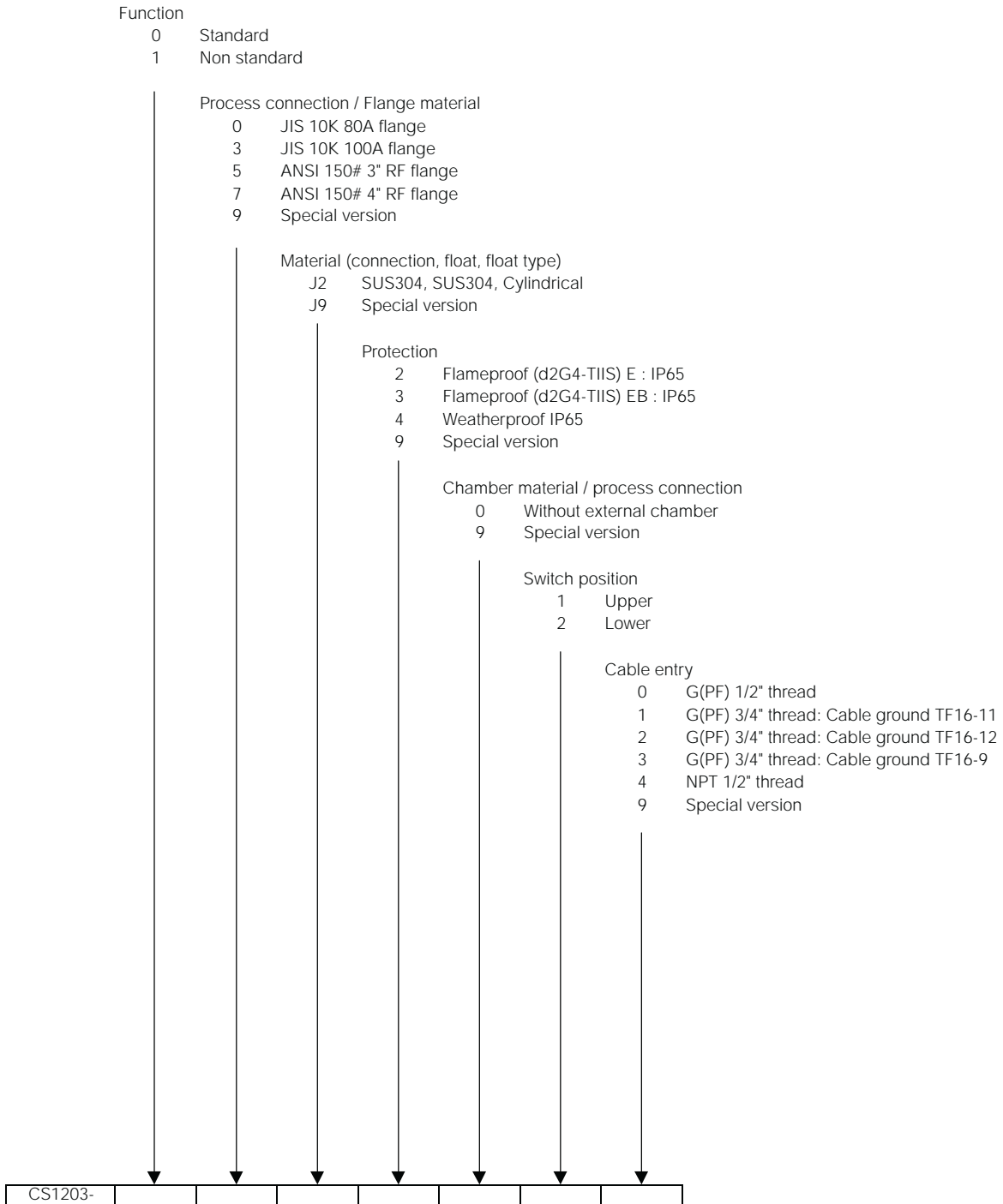
CS-1103 is float type level switch for installation on side of tanks and vessels. It provides contact output with lead switch actuated by a magnet.



Product Structure (cont.)

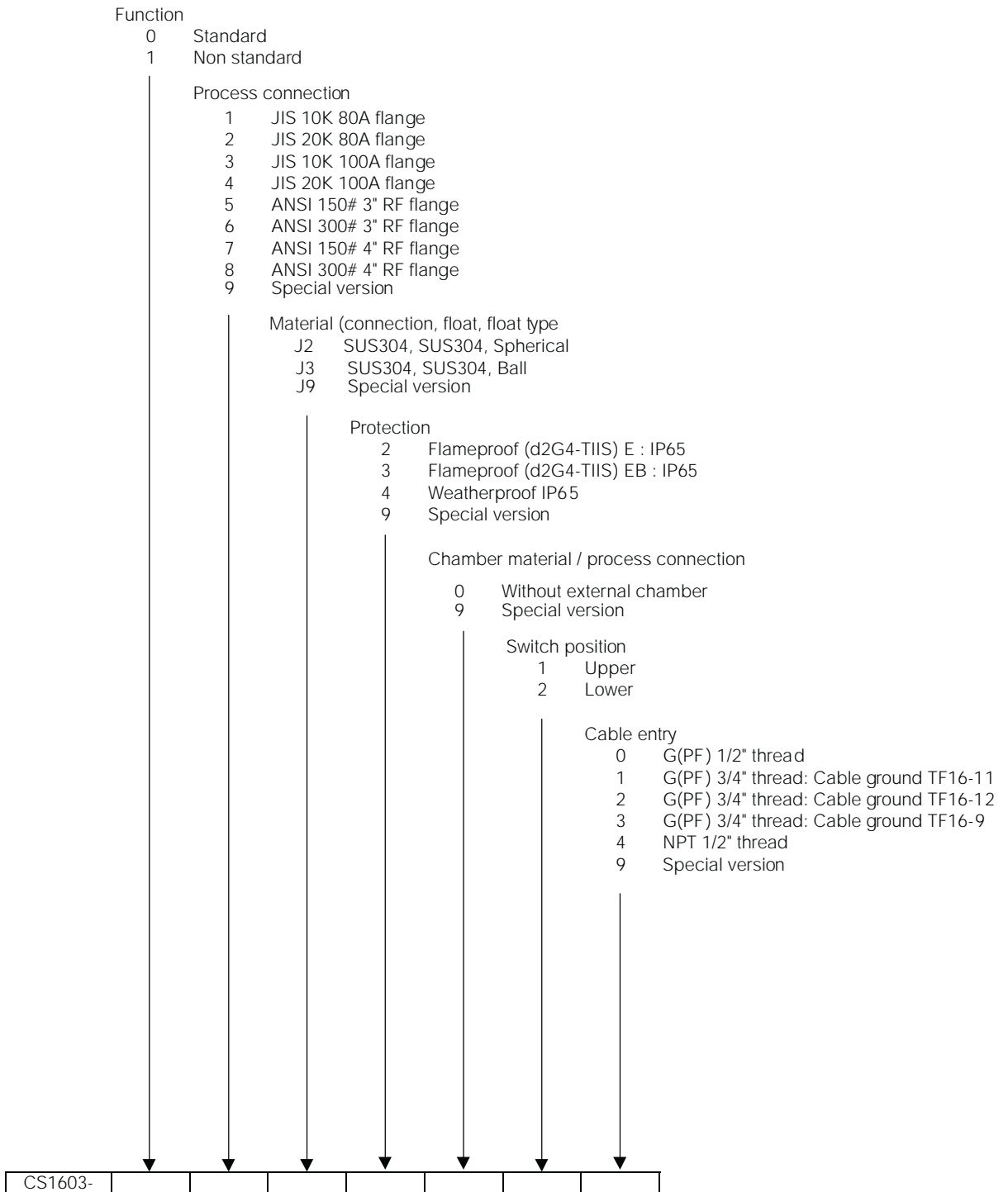
LEVEL SWITCH CS1203

CS-1203 is float type level switch for installation on side of tanks and vessels. It provides contact output with lead switch actuated by a magnet.



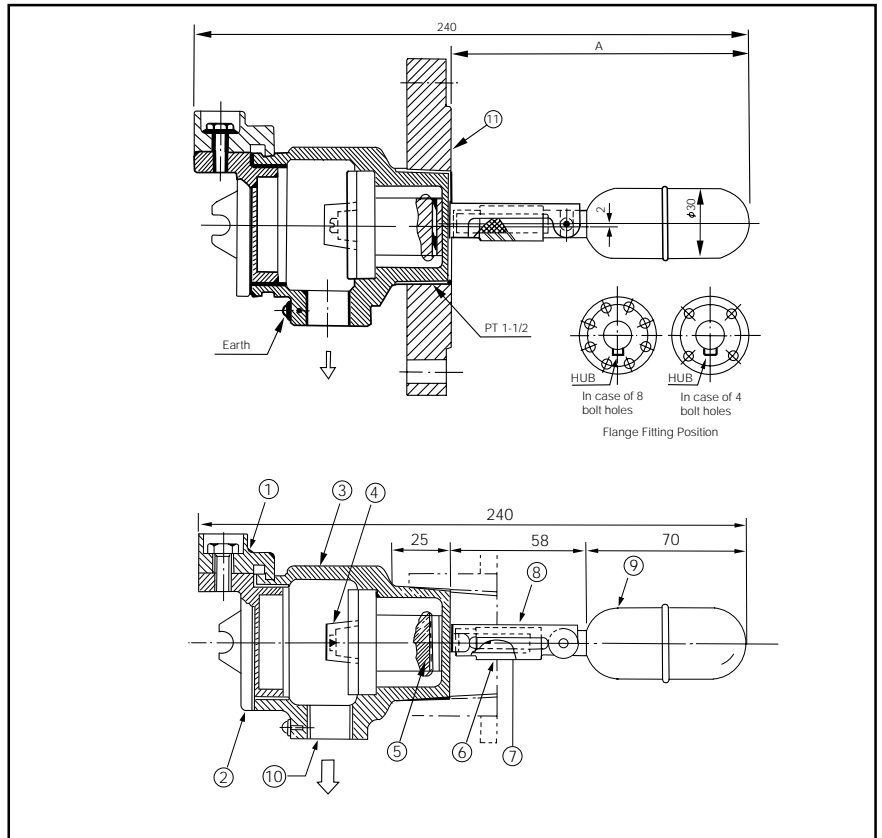
LEVEL SWITCH CS1603

CS-1603 is float type level switch for installation on side of tanks and vessels. It provides contact output with lead switch actuated by a magnet.



External Dimension

- ① Explosion-proof stopper
- ② Cover
- ③ Housing
- ④ Terminal
- ⑤ Reed Switch
- ⑥ Magnet
- ⑦ Magnet Cover
- ⑧ Stopper
- ⑨ Float
- ⑩ Cable inlet 16mm in diameter
- ⑪ Flange



Sakura Endress Co.,Ltd.
 862-1 Mitsukunugi,
 Sakaigawamura,
 Higashi-Yatsushirogun,
 Yamanashiken 406-0846
 Japan

Phone: ++81-55-266-4964
 Fax: ++81-55-266-4969
 E-mail: pcm@sew.co.jp

Sakura Endress
 The Power of Know How

